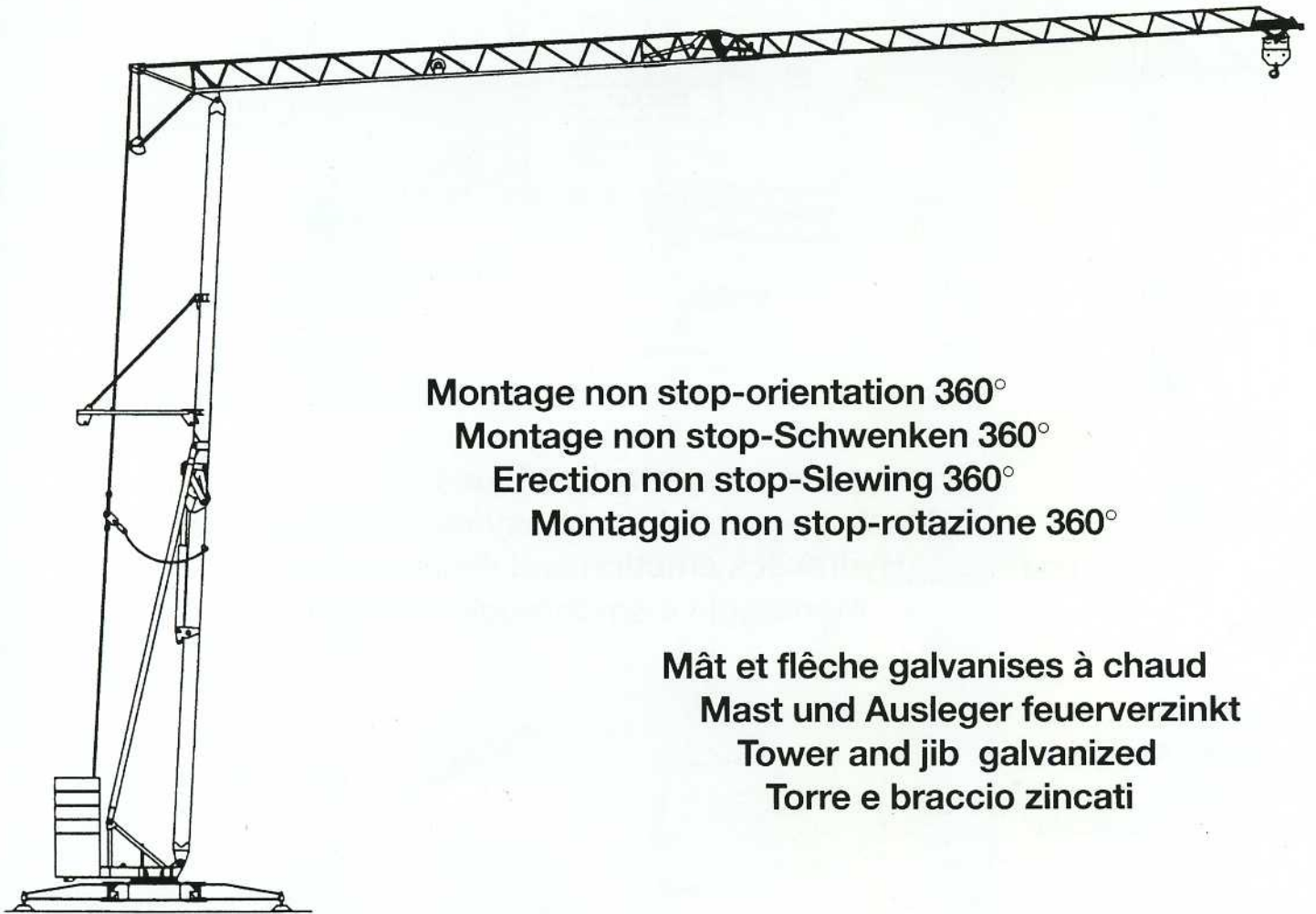




**edilgru**  
International s.r.l.



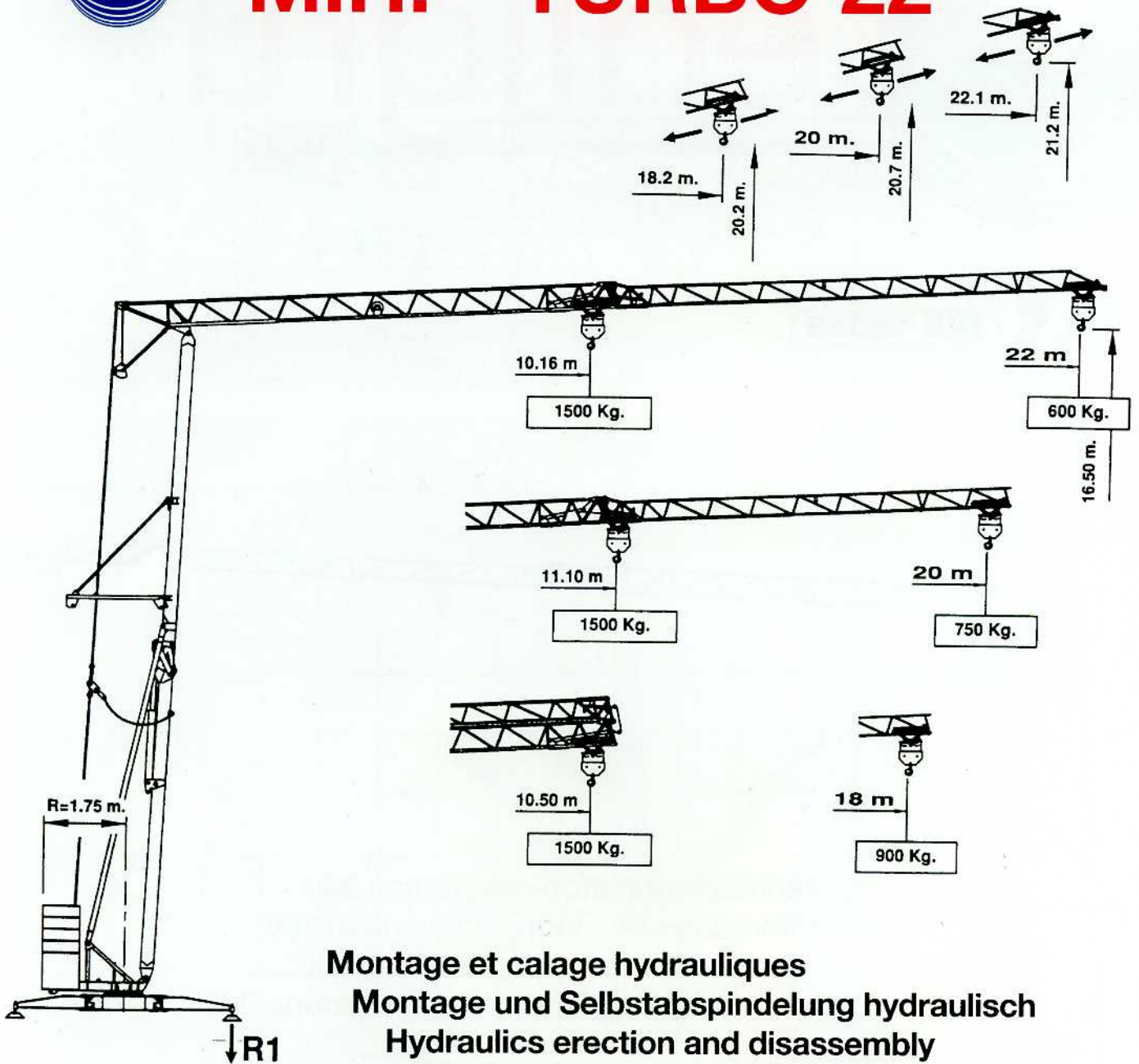
**Montage non stop-orientation 360°**  
**Montage non stop-Schwenken 360°**  
**Erection non stop-Slewing 360°**  
**Montaggio non stop-rotazione 360°**

**Mât et flèche galvanisés à chaud**  
**Mast und Ausleger feuerverzinkt**  
**Tower and jib galvanized**  
**Torre e braccio zincati**

**M.H. - TURBO 22**

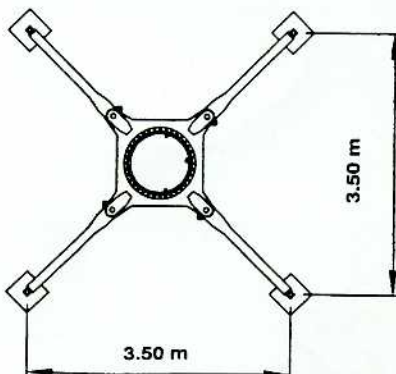


# M.H. - TURBO 22



**Montage et calage hydrauliques**  
**Montage und Selbstabspindelung hydraulisch**  
**Hydraulics erection and disassembly**  
**Montaggio e smontaggio idraulici**

Version sur vérin  
Ausführung Abstützspindeln  
Jacks version  
Versione su stabilizzatori



# Réactions - Eckdrücke - Reactions - Reazioni

R1

○ 8800 da N

⊗ 6000 da N

● En service  
■ Hors service

● Im Betrieb  
■ Ausser Betrieb

● In service  
■ Out of service

● In servizio  
■ Fuori servizio

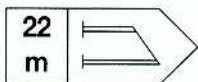
Poids de construction sans essieux - Konstruktionsgewicht ohne transportachse  
Dead weight without transport axles - Peso della gru senza assali

Kg 5400

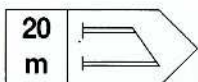
Poids du lest - Ballastgewicht - Ballast weight - Peso zavorra rotante

Kg 9600

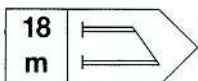
## Courbes de charges - Lastkurven - Load curves - Curve di carico



10,16	12	14	16	18	20	22	m
1500	1230	1025	875	762	672	600	Kg



→	11,1	12	14	16	18	20	m
→	1500	1370	1140	975	850	750	Kg



→	→	11,63	14	16	18	m
→	→	1500	1210	1033	900	Kg

Flèche relevée - Ausleger in Steilstellung  
Luffing jib - Braccio impennato

600 Kg cost.

## Mécanismes - Antriebe - Mechanisms - Meccanismi

			m/min.	Kg	CV-PS hp	Kw
Levage - Heben - Hoisting Sollevamento			4	1500	1,75	1,3
			17	1500	7,5	5,5
			34	700	7,5	5,5
Distribution - Katzfahren Trolleyng - Carrello			22		1,5	1,1
Orientation - Schwenken Slewing - Rotazione			0,2 / 0,95 tr/min - U/min rpm - g/min		2,5 da N m Kgm	

Puissance électrique nécessaire  
Anschlusswert  
Necessary electric power  
Potenza elettrica necessaria

380 V  
50 Hz

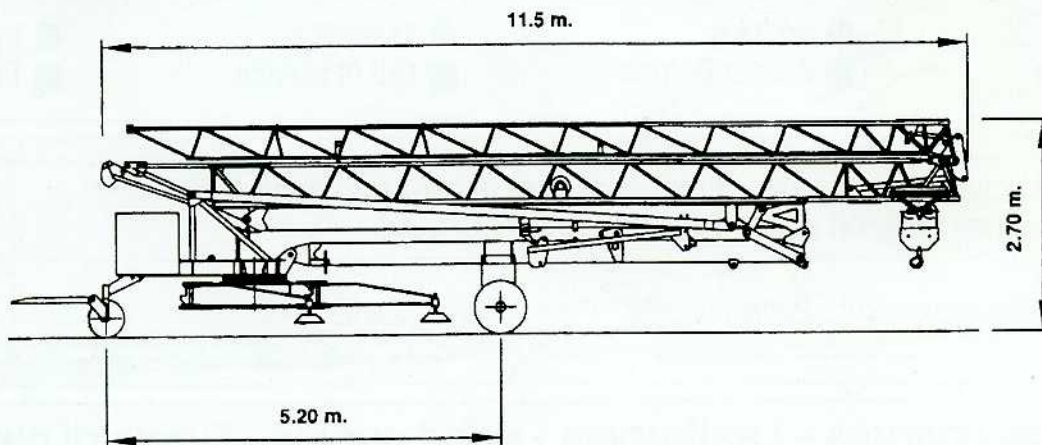
Réseau - Netzstrom  
Mains supply - Potenza

10 Kw

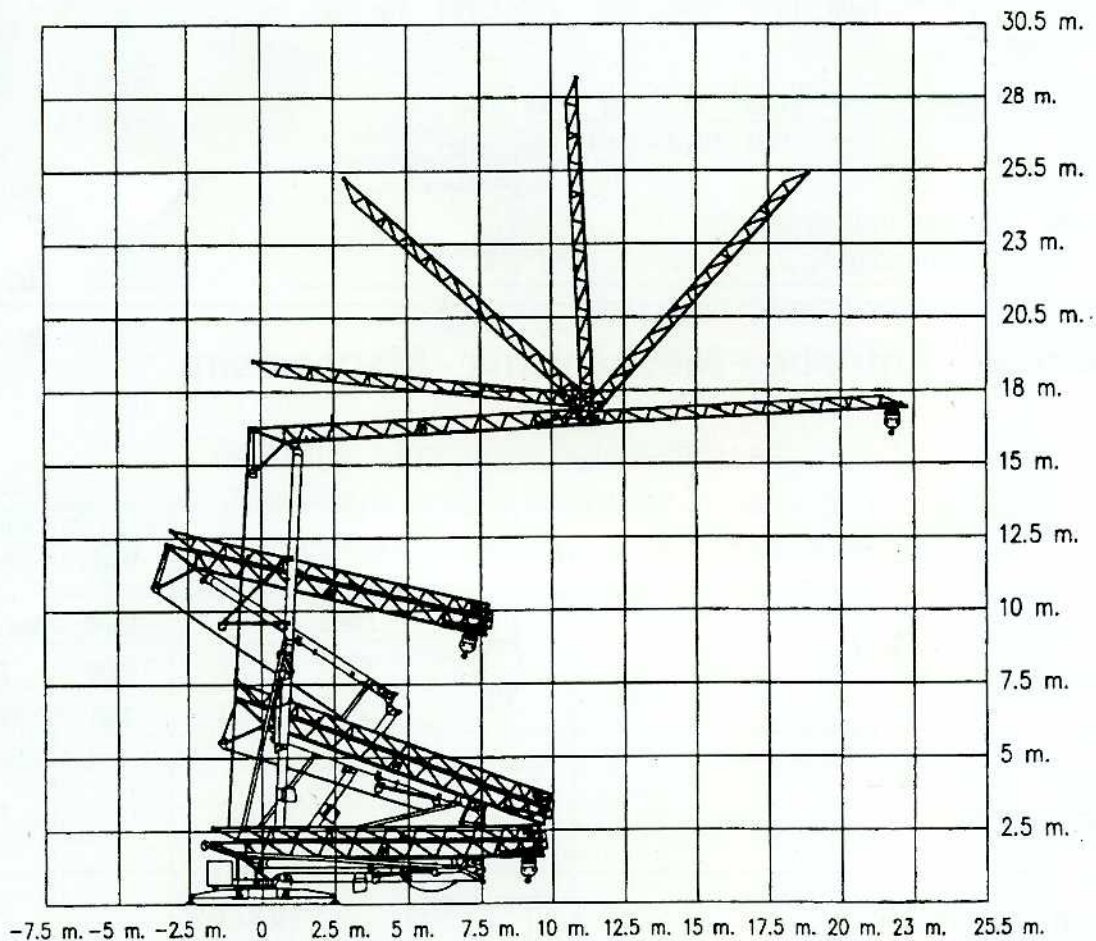
Groupe électrogène  
Stromaggregat  
Generator set  
Gruppo elettrogeno

Nous consulter  
Auf anfrage  
Consult us.  
Consultarci

Mode de transport - Transportart - Kind of transport - Soluzione di traino



Montage - Montage - Erection - Montaggio



sede legale  
26015 Soresina (CR) Via Genala, 48  
stabilimento: via Muzio da Soresina, snc  
Tel. 0039-0374-344391  
(2 linee ISDN ric. automatica)  
Fax 0039-0374-341541  
2 fax collegati 24 ore su 24  
e-mai: info@edilgru.com - ww.edilgru.com

