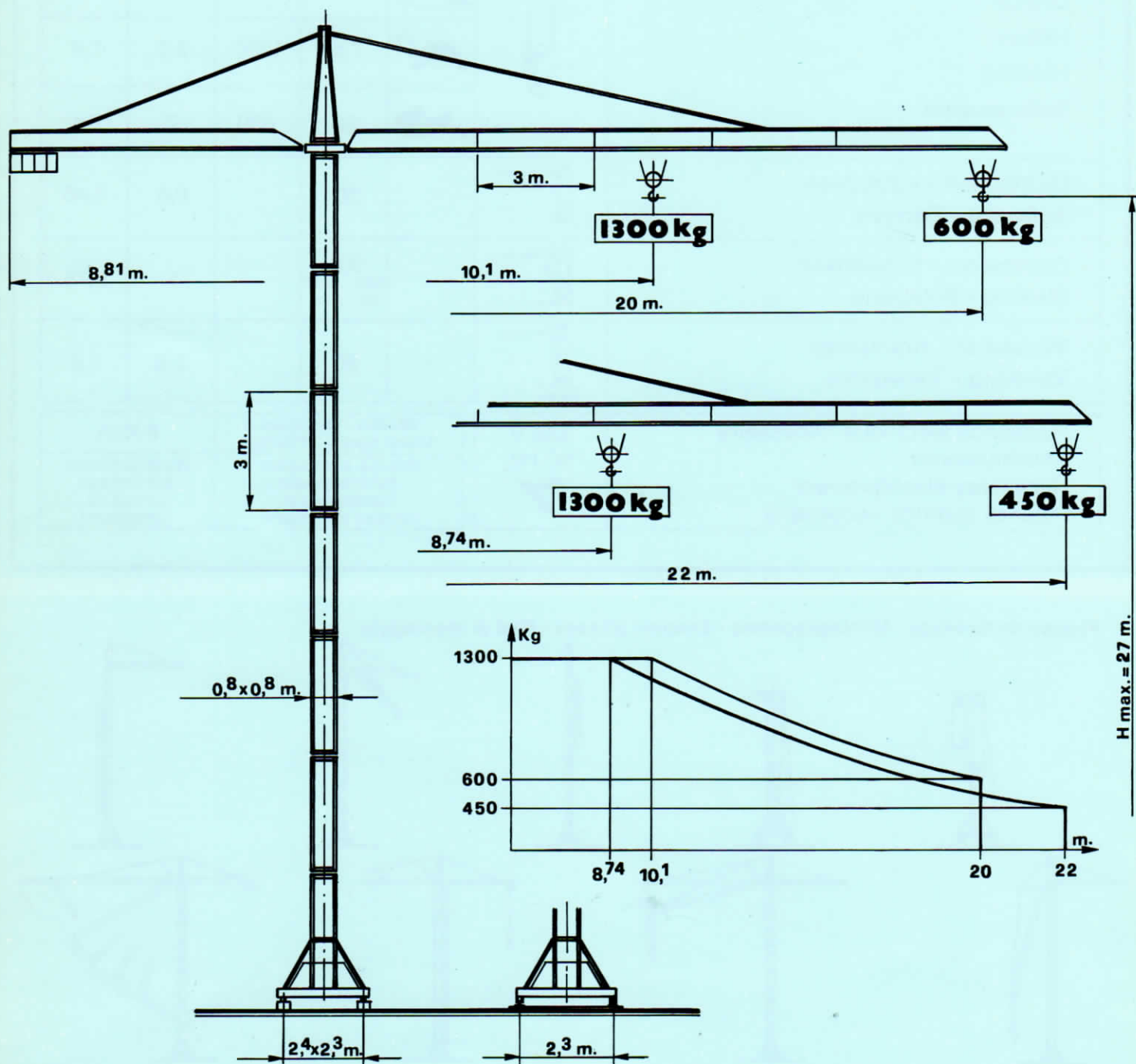












edilgru spa



600-20 R.A.S.

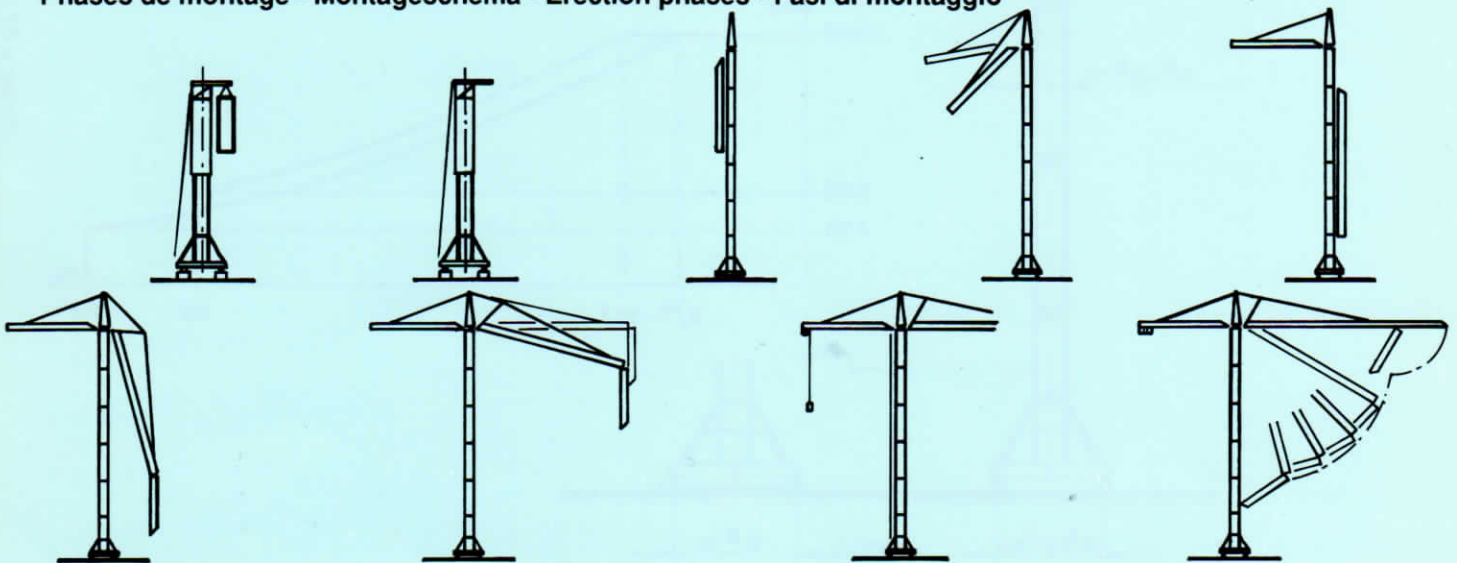
Poids de construction sans lest - Konstruktionsgewicht ohne ballast Dead weight without ballast - Peso della gru senza zavorra	t. 5
Lest de base - Ground ballast - Base ballast - Zavorra di base	t. 24
Lest de contrepoids - Ballastgewicht - Ballast weight - Zavorra contrappeso	t. 1,46

Mécanismes - Antriebe - Mechanisms - Meccanismi

			m/min.	Kg	CV - PS hp	Kw
Levage Heben Hoisting Sollevamento						
			7,5	1300	2,5	1,8
			30	600	7	5,1
Distribution - Katzfahren Trolleying - Carrello			30		0,6	0,45
Orientation - Schwenken Slewing - Rotazione			0,8 <small>tr/min - U/min rpm - g/min</small>		1	0,75
Translation - Kranfahren Travelling - Traslazione			20		2,5	1,8
Puissance électrique nécessaire Anschlusswert Necessary electric power Potenza elettrica necessaria	380 V 50 Hz 	Réseau - Netzstrom Mains supply - Potenza		8 KVA		
		Groupe électrogène Stromaggregat Generator set Gruppo elettrogeno		Nous consulter Auf Anfrage Consult us. Consultarci		

Modifications réservées - Änderungen vorbehalten - Subject to modification - Con riserva di modifiche

Phases de montage - Montageschema - Erection phases - Fasi di montaggio



sede e stabilimento
via guida - 26015 soresina (cr) Italy
tel. 0374/40391 (4 linee ric. autom.)
telefax 0374/41541
EDILGRU - SORESINA
telex 312088 edilgru I