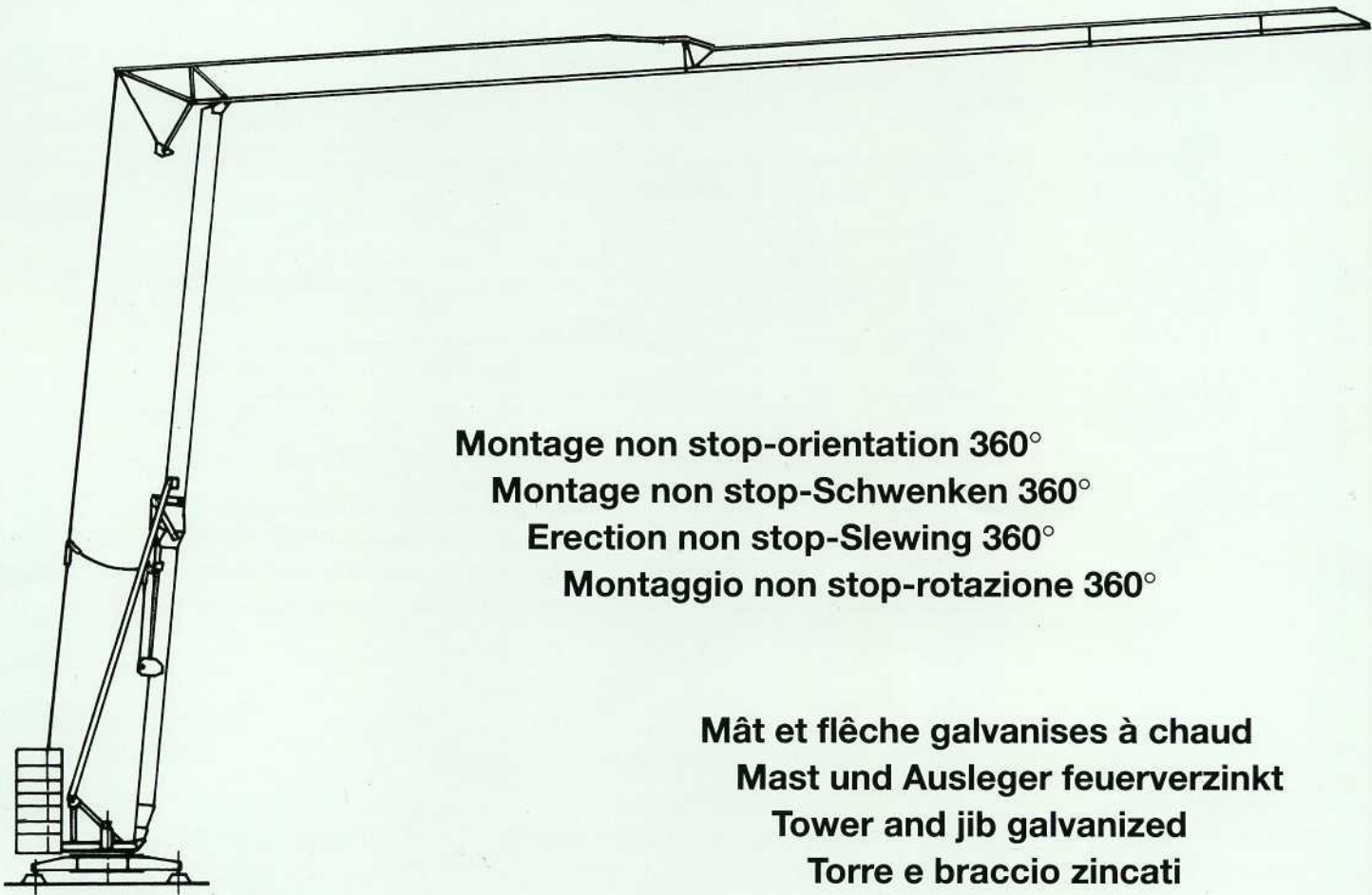




edilgru

International s.r.l.



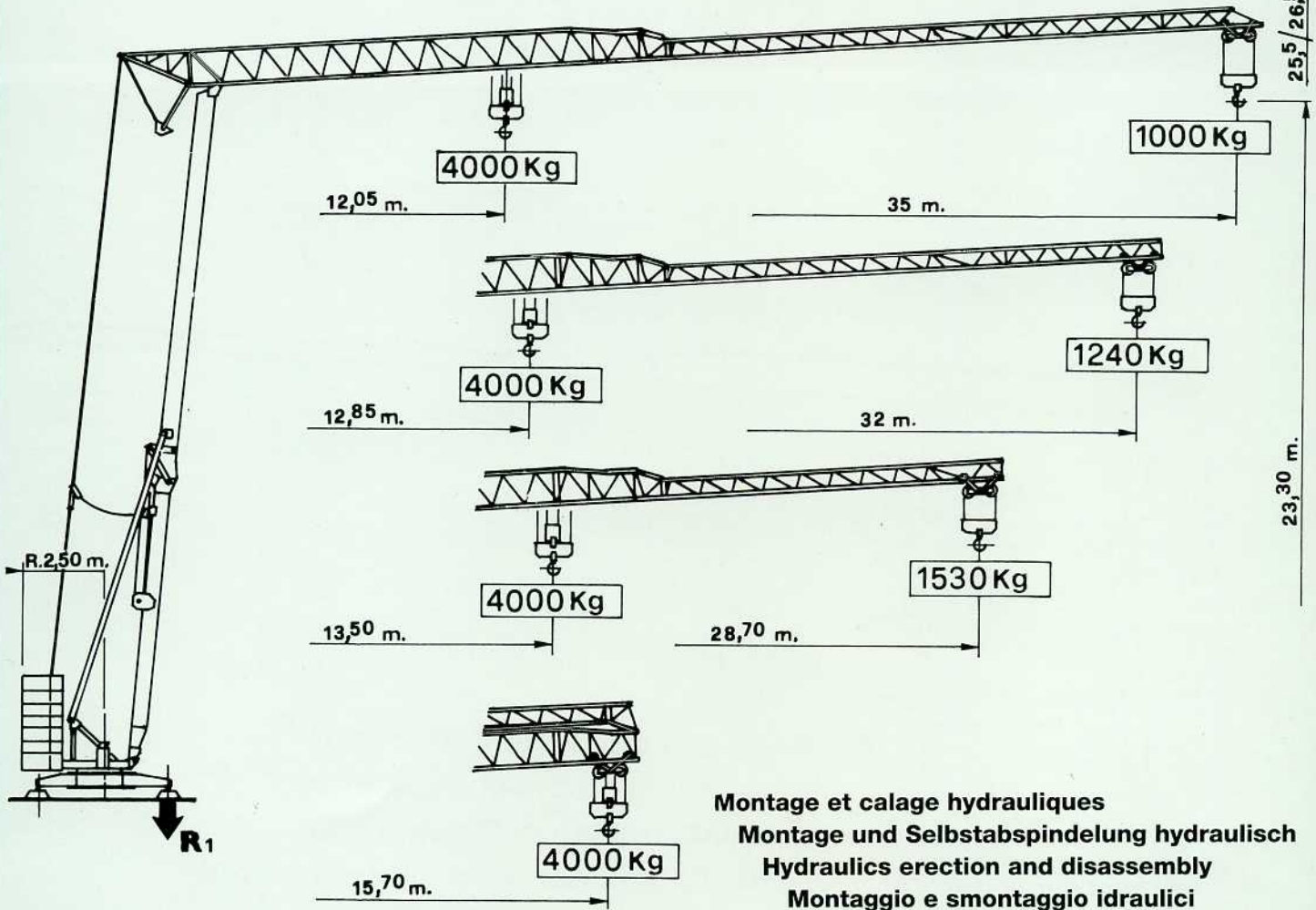
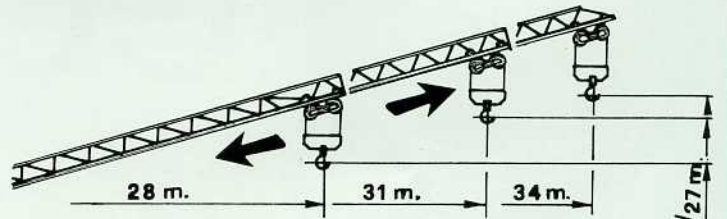
Montage non stop-orientation 360°
Montage non stop-Schwenken 360°
Erection non stop-Slewing 360°
Montaggio non stop-rotazione 360°

Mât et flèche galvanisés à chaud
Mast und Ausleger feuerverzinkt
Tower and jib galvanized
Torre e braccio zincati

M.H. TURBO 35



M.H. TURBO 35

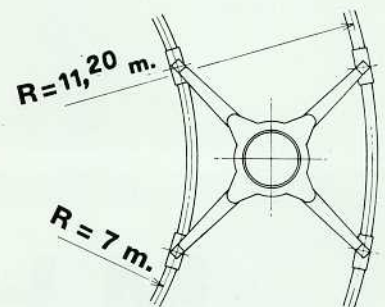
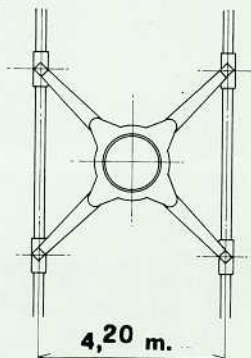
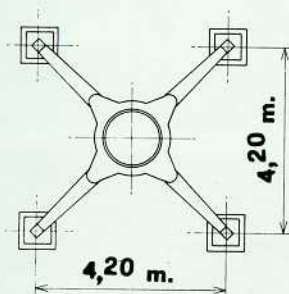


Montage et calage hydrauliques
Montage und Selbstabspindelung hydraulisch
Hydraulics erection and disassembly
Montaggio e smontaggio idraulici

Version sur vérin
 Ausführung Abstützspindeln
 Jacks version
 Versione su stabilizzatori

Version voie droite
 Ausführung gerade Schienenbahn
 Straight track version
 Versione traslazione dritta

Version voie courbe
 Ausführung kurven Schienenbahn
 Curved track version
 Versione traslazione curva



Réactions - Eckdrücke - Reactions - Reazioni

R1
● 23900 da N
■ 16100 da N
● En service

● In Betrieb

● In service

● In servizio

■ Hors service

■ Ausser Betrieb

■ Out of service

■ Fuori servizio

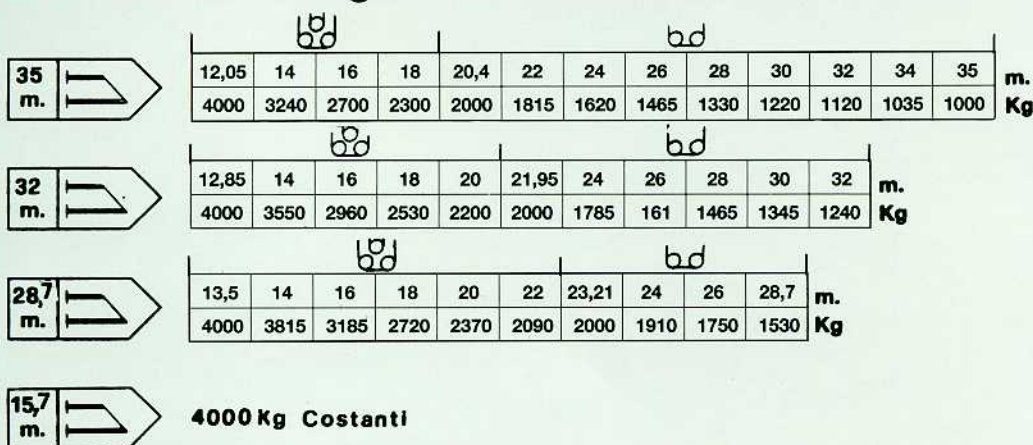
 Poids de construction sans essieux - Konstruktionsgewicht ohne Transportachse -
 Dead weight without transport axles - Peso della gru senza assali

Kg. 13800

Poids du lest - Ballastgewicht - Ballast weight - Peso zavorra rotante

Kg. 25000

Courbes de charges - Lastkurven - Load curves - Curve di carico


 Flèche relevée - Ausleger in Steilstellung
 Luffing jib - Braccio impennato

1000 kg cost.

Mécanismes - Antriebe - Mechanisms - Meccanismi

		m/min.	kg	CV - PS hp	Kw	
Levage Heben Hoisting Sollevamento			6	2000	3	2,2
			24	2000	12	8,8
			48	1300	14	10,3
			3	4000	3	2,2
			12	4000	12	8,8
			24	2600	14	10,3
Distribution - Katzfahren Trolleying - Carrello		20/40		1,5/3	1,1/2,2	
Orientation - Schwenken Slewing - Rotazione		0,2/1,1 tr/min - U/min rpm - g/min		3,5 da N m kgm		
Translation - Kranfahren Travelling - Traslazione		30		2 x 1,5	2 x 1,1	

 Puissance électrique nécessaire
 Anschlusswert
 Necessary electric power
 Potenza elettrica necessaria

 380 V
 50 Hz

 Réseau - Netzstrom
 Mains supply - Potenza

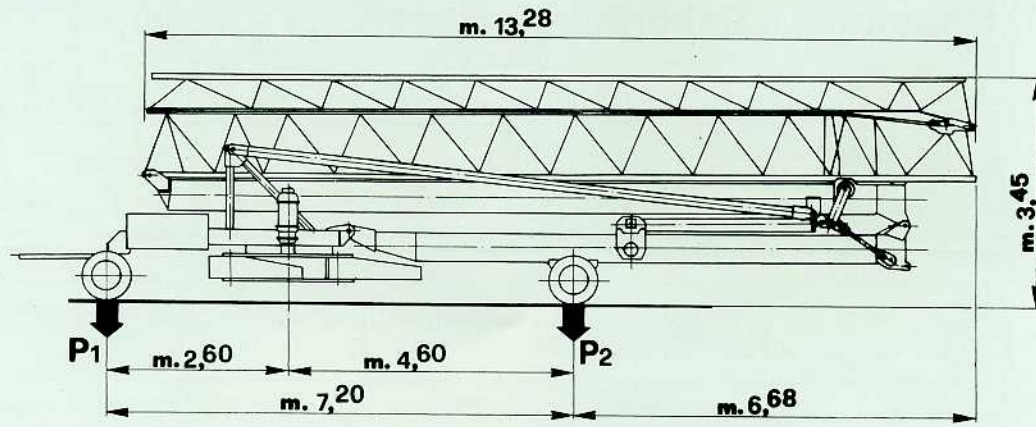
20 KVA

 Groupe électrogène
 Stromaggregat
 Generator set
 Gruppo elettrogeno

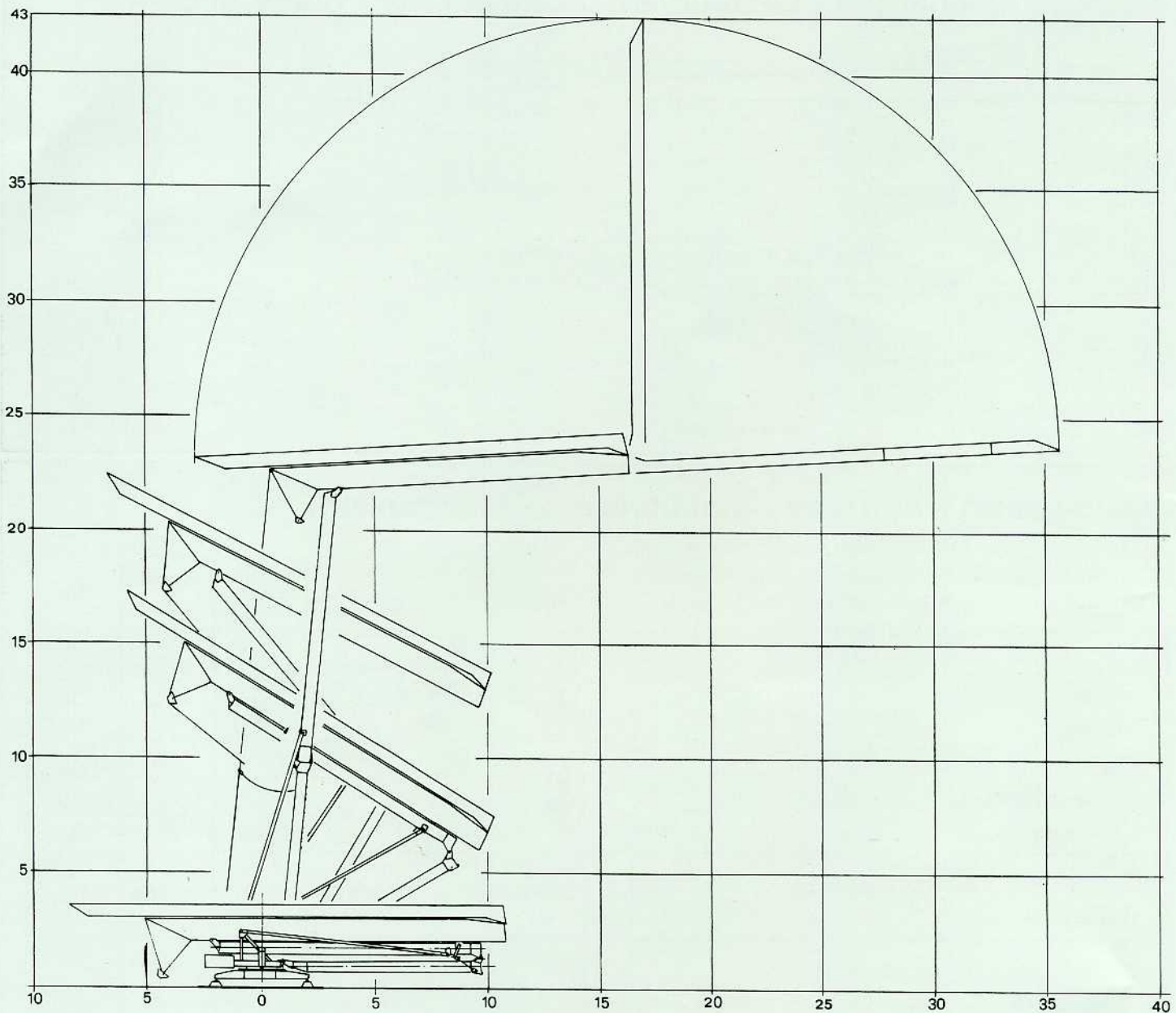
 Nous consulter
 Auf Anfrage
 Consult us.
 Consultarci

Mode de transport - Transportart - Kind of transport - Soluzione di traino

P₁ - kg	7500
P₂ - kg	11300
P_{Tot} - kg	18800



Montage - Montage - Erection - Montaggio



Sede Legale: Via Genala, 48 - Stabilimento: Via Muzio da Soresina
 26015 Soresina (CR) - ITALY
 International s.r.l. Tel. 0039-0374-344391 (2 linee ISDN ric. automatica)
 Fax 0039-0374-341541 (2 fax collegati 24 ore su 24)
 • www.edilgru.com
 • e-mail: info@edilgru.com

