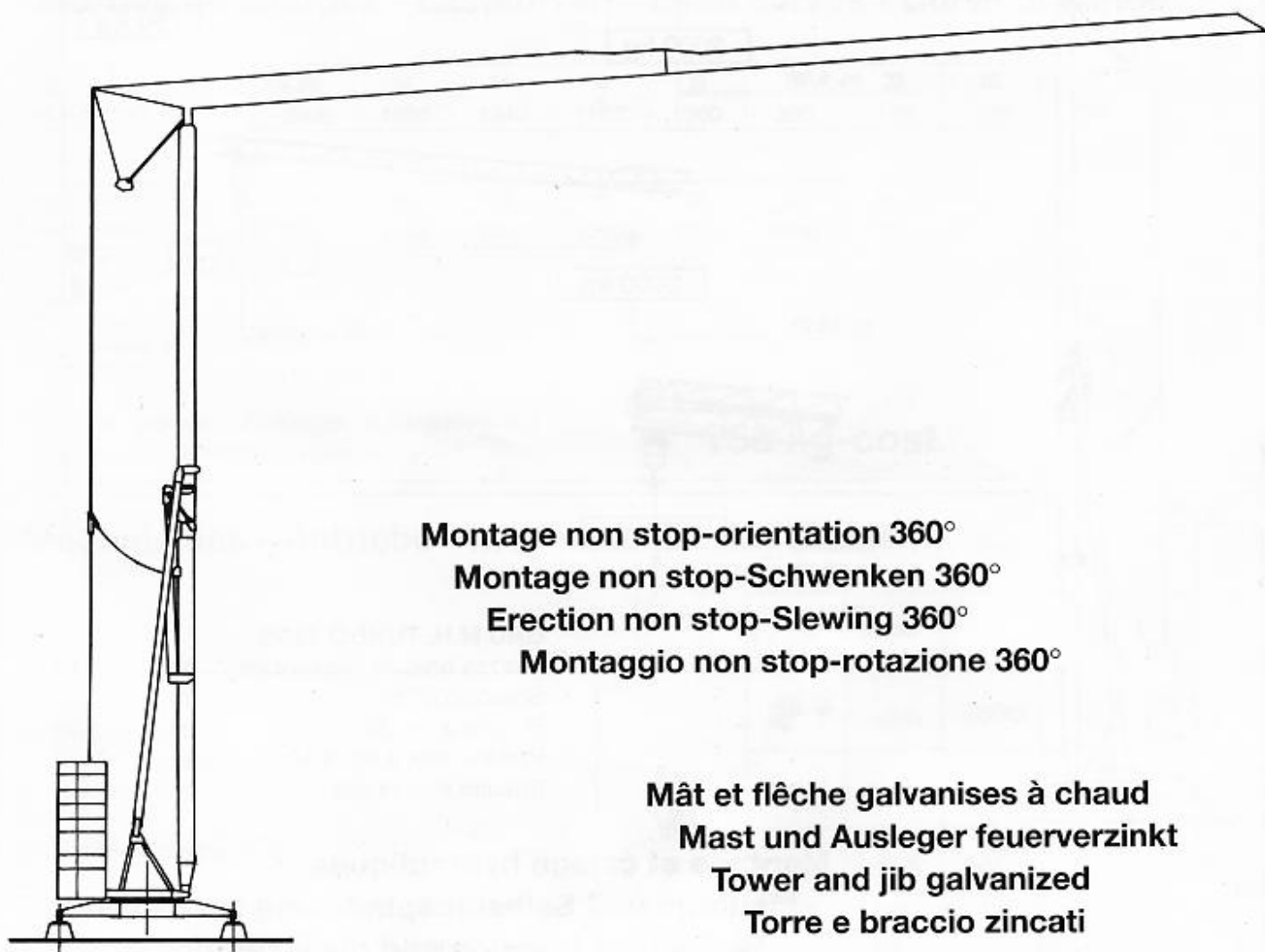




# edilgru

International s.r.l.



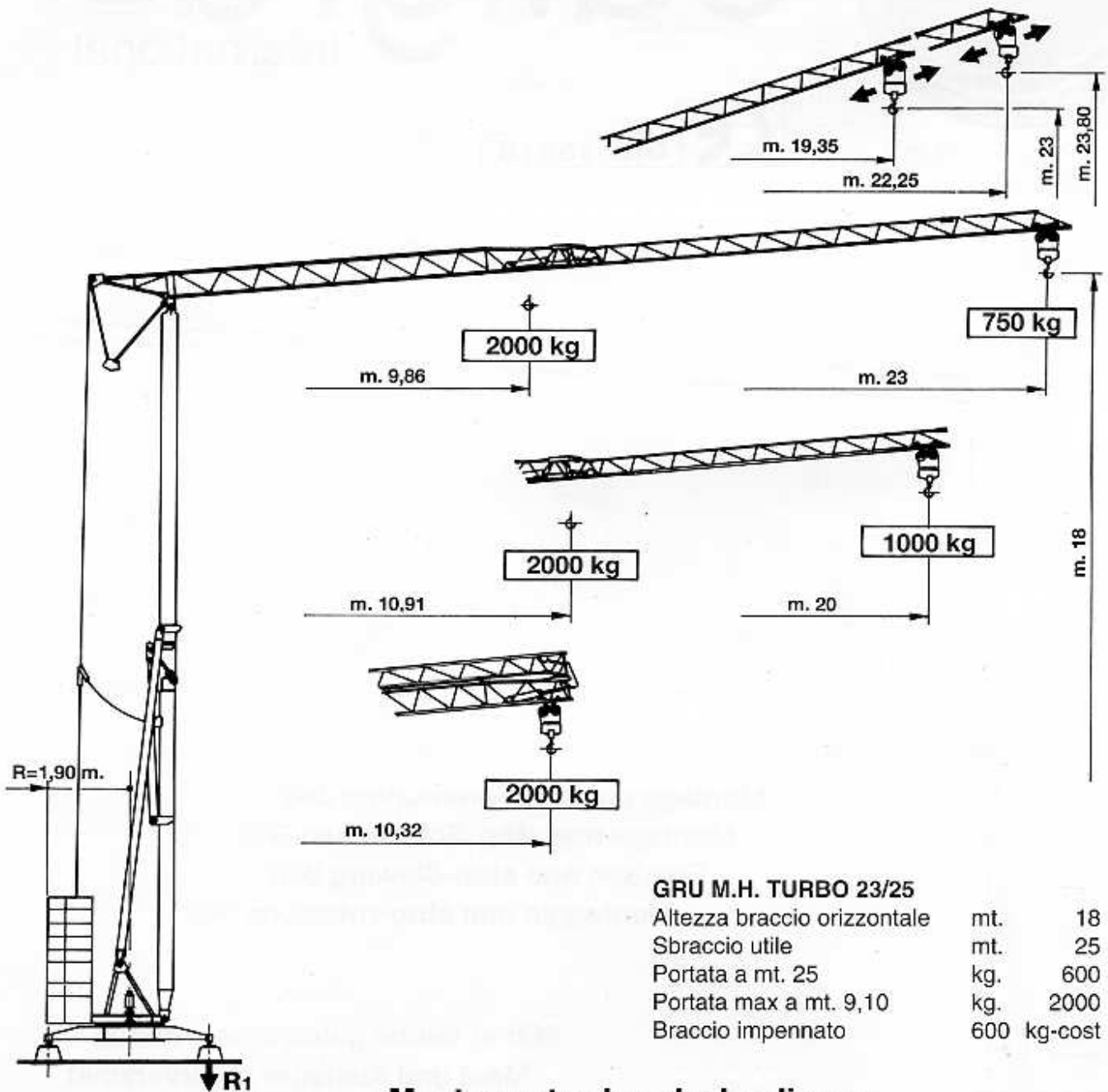
**Montage non stop-orientation 360°**  
**Montage non stop-Schwenken 360°**  
**Erection non stop-Slewing 360°**  
**Montaggio non stop-rotazione 360°**

**Mât et flèche galvanisés à chaud**  
**Mast und Ausleger feuerverzinkt**  
**Tower and jib galvanized**  
**Torre e braccio zincati**

## M.H. TURBO 23



# M.H. TURBO 23

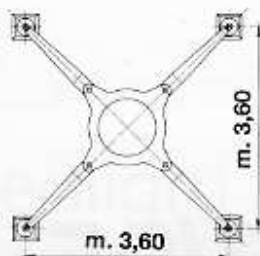


## Montage et calage hydrauliques

## Montage und Selbstabspindelung hydraulisch

## Hydraulics erection and disassembly

## Montaggio e smontaggio idraulici



Version sur vérin  
 Ausführung Abstützspindeln  
 Jacks version  
 Versione su stabilizzatori

# Réactions - Eckdrücke - Reactions - Reazioni

**R1**

● 11660 da N

■ 8900 da N

● En service

● In Betrieb

● In service

● In servizio

■ Hors service

■ Ausser Betrieb

■ Out of service

■ Fuori servizio

 Poids de construction sans essieux - Konstruktionsgewicht ohne Transportachse -  
 Dead weight without transport axles - Peso della gru senza assali

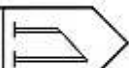
Kg. 8100

Poids du lest - Ballastgewicht - Ballast weight - Peso zavorra rotante

Kg. 12300

## Courbes de charges - Lastkurven - Load curves - Curve di carico

23 m.		9,86	12	14	16	18	20	22	23	m. Kg
		2000	1600	1340	1150	1000	880	790	750	






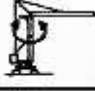

20 m.		10,91	12	14	16	18	20	m. Kg
		2000	1790	1500	1290	1130	1000	

10 <sup>32</sup> m.		2000 Kg cost.
------------------------	--	---------------


 Flèche relevée - Ausleger in Steilstellung  
 Luffing jib - Braccio impennato

**750 kg-cost.**

## Mécanismes - Antriebe - Mechanisms - Meccanismi

		m/min.	kg	CV - PS hp	Kw	
Levage Heben Hoisting Sollevamento			4,5	2000	2,5	1,83
			18,5	2000	10	7,35
			37,5	1000	10	7,35
Distribution - Katzfahren Trolleying - Carrello		30		2	1,5	
Orientation - Schwenken Slewing - Rotazione		0,2 - 1 tr/min - U/min rpm - g/min		2,5 da N m kg/m		
Translation - Kranfahren Travelling - Traslazione		28		1 X m <sup>2</sup>	0,75Xm <sup>2</sup>	

 Puissance électrique nécessaire  
 Anschlusswert  
 Necessary electric power  
 Potenza elettrica necessaria

 380 V  
 50 Hz  


 Réseau - Netzstrom  
 Mains supply - Potenza

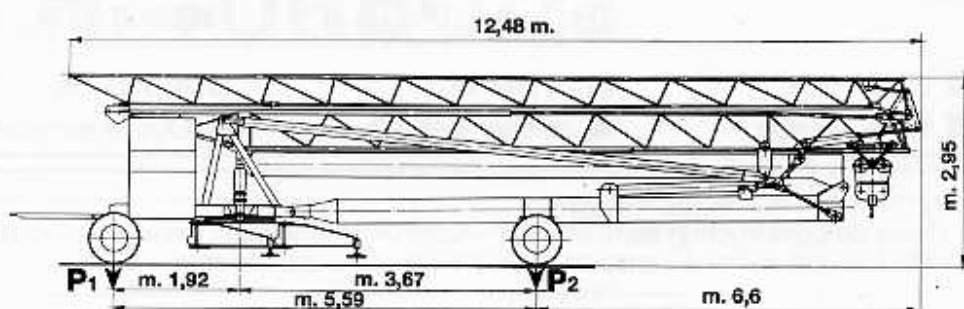
15 KVA

 Groupe électrogène  
 Stromaggregat  
 Generator set  
 Gruppo elettrogeno

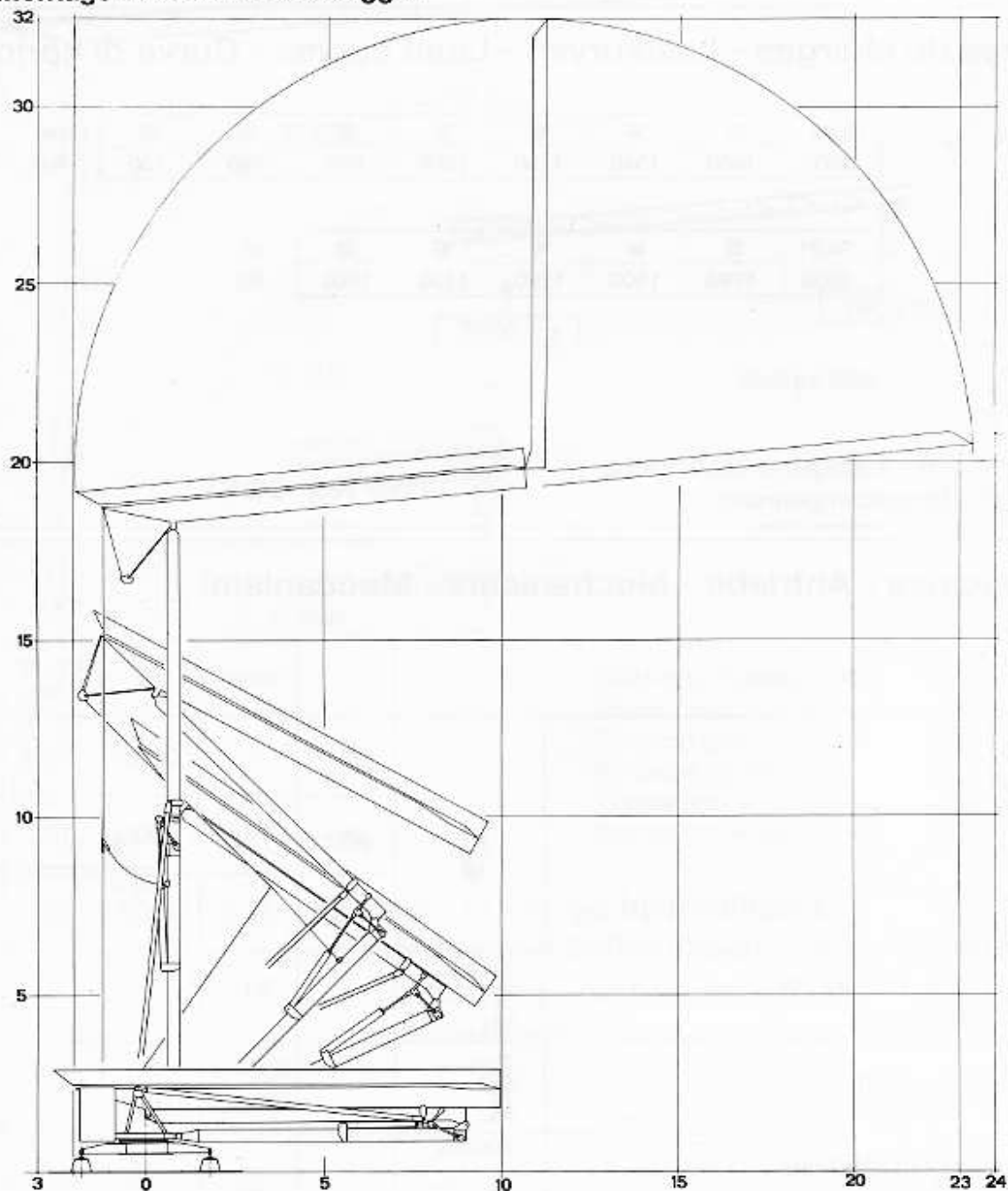
 Nous consulter  
 Auf Anfrage  
 Consult us.  
 Consultarci

Mode de transport - Transportart - Kind of transport - Soluzione di traino

	A	B
<b>P<sub>1</sub></b> - kg	6410	3750
<b>P<sub>2</sub></b> - kg	8290	7970
<b>P<sub>Tot</sub></b> - kg	14700	11540



Montage - Montage - Erection - Montaggio



Sede Legale: Via Genala, 48 - Stabilimento: Via Guida, 8  
26015 Soresina (CR) - ITALY  
Tel. 0039-0374-344391 (2 linee ISDN ric. automatica)  
Fax 0039-0374-341541 (2 fax collegati 24 ore su 24)  
www.paginegialle.it/edilgru • www.edilgru.com  
e-mail: edilgru@tin.it • e-mail: edilgru@libero.it

