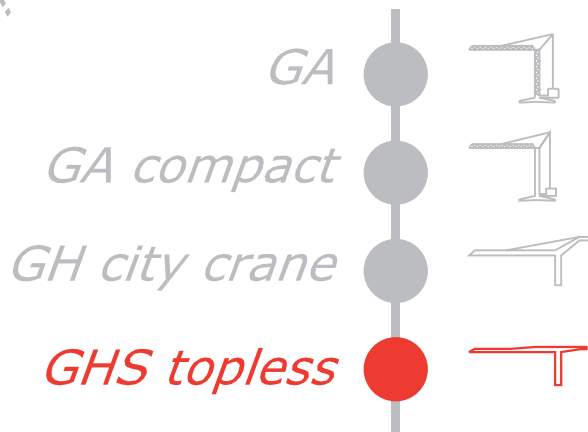


# GRU A TORRE

# GHS 513

2500

NUOVA SERIE  
TOPLESS!!!



*FB F.lli Butti s.r.l.*

*Via XXV Aprile, 58*

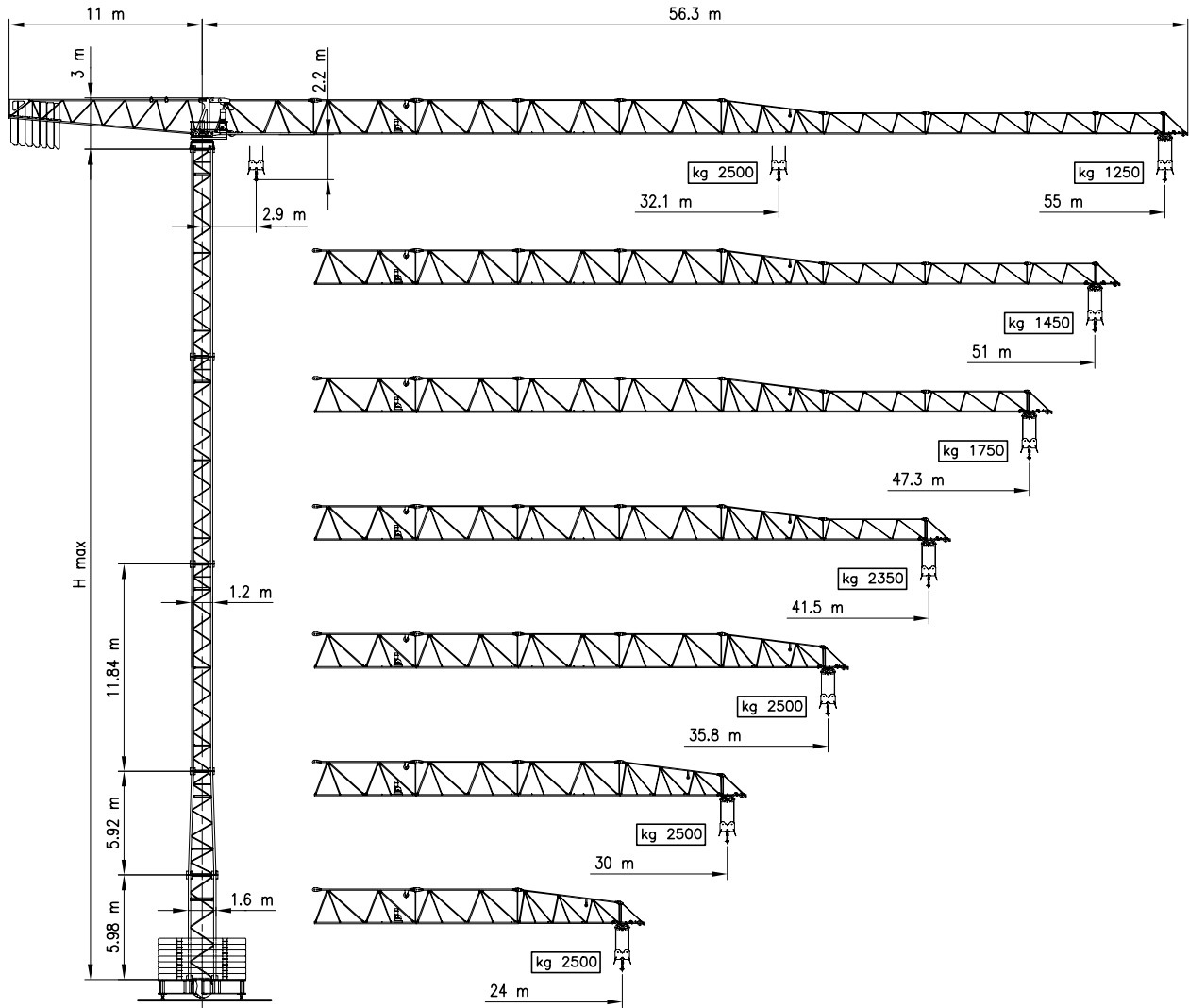
*23868 Valmadrera (LC) - ITALIA*

*Tel. 0341.581108 - Fax 0341.200253*

*E-mail : fbgru@fbgru.it - <http://www.fbgru.it>*



# GHS 513 - 2500

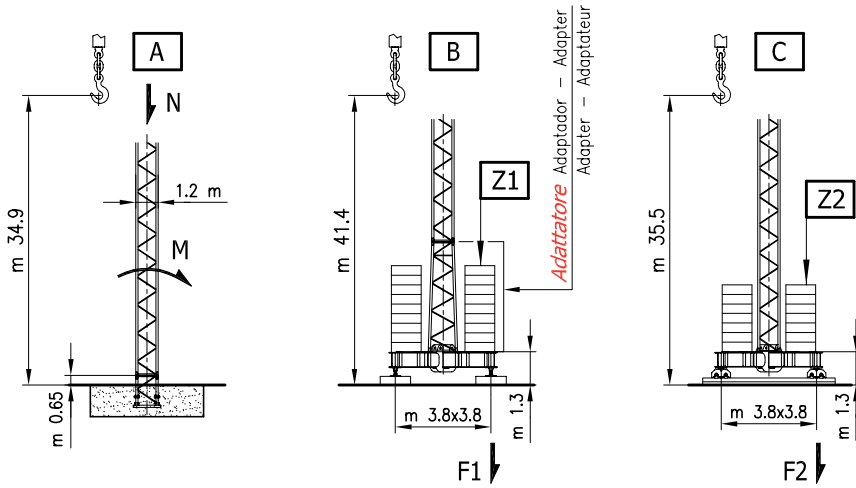


## CURVE DI CARICO CURVAS DE CARGAS - LOAD DIAGRAMS LASTKURVEN - COURBES DE CHARGES

m	24	30	31.8	32.1	33	34.6	35.8	38	39.3	40	41.5	43	45	47.3	49	51	52	53	54	55
kg				2500	2422	2297	2210	2065	1987	1947	1866	1791	1699	1603	1538	1467	1433	1401	1370	1250
			2500	2472	2397	2272	2186	2042	1965	1926	1846	1771	1680	1585	1520	1450				
						2500	2420	2260	2174	2130	2041	1958	1856	1750						
									2500	2451	2350									
							2500													
		2500																		
	2500																			

**II** (0 - 2500 kg)

**TORRE/REAZIONI per H MAX 36 - 42 m** MASTIL/REACCIONES – MASTS/REACTIONS  
 MASTE/ECKDRUCKE – MAT/RÉACTIONS



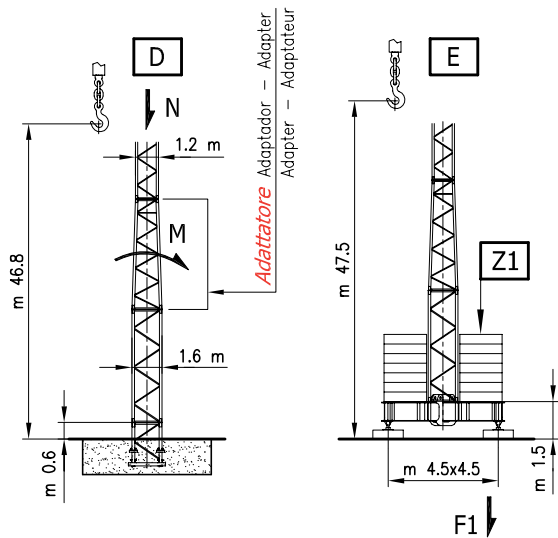
**Altezza MAX. utile al gancio**  
 Altura MAX. bajo gancho  
 MAX. height under hook  
 MAX. hakenhöhe  
 Hauteur MAX. grue

	A		B	C	Z1 (kg)	Z2 (kg)
	N (kN)	M (kNm)	F1 (kN)	F2 (kN)		
<b>IN SERVIZIO</b> EN SERVICIO – IN SERVICE IN BETRIEB – EN SERVICE	343	1083	498	433	72000	56000
<b>FUORI SERVIZIO</b> FUERA DE SERVICIO – OUT OF SERVICE AUSSER BETRIEB – HORS SERVICE	309	1366	720	517	N°18 4000 kg	N°14 4000 kg

**ZAVORRA DI BASE**  
 LASTRE DE BASE  
 CENTRAL BALLAST  
 ZENTRAL BALLASTSTEIN  
 LEST DE BASE

**PESO DELLA GRU SENZA ZAVORRE, CON ALTEZZA E BRACCIO MAX.**  
 PESO DE LA GRUA SIN LASTRE CON FLECHA Y ALTURA MAX. – CRANE WEIGHT WITHOUT BALLAST WITH LONGEST JIB AND MAX. HEIGHT  
 KONSTRUKTIONSGEWICHT – A VIDE SANS LEST AVEC FLECHE ET HAUTEUR MAX. **kg 21905**

**TORRE/REAZIONI per H MAX 48 m** MASTIL/REACCIONES – MASTS/REACTIONS  
 MASTE/ECKDRUCKE – MAT/RÉACTIONS



**Altezza MAX. utile al gancio**  
 Altura MAX. bajo gancho  
 MAX. height under hook  
 MAX. hakenhöhe  
 Hauteur MAX. grue

	D		E	Z1 (kg)
	N (kN)	M (kNm)	F1 (kN)	
<b>IN SERVIZIO</b> EN SERVICIO – IN SERVICE IN BETRIEB – EN SERVICE	383	1311	519	84000
<b>FUORI SERVIZIO</b> FUERA DE SERVICIO – OUT OF SERVICE AUSSER BETRIEB – HORS SERVICE	350	2491	794	N°14 6000 kg


**ZAVORRA DI BASE**  
 LASTRE DE BASE  
 CENTRAL BALLAST  
 ZENTRAL BALLASTSTEIN  
 LEST DE BASE

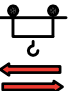
**PESO DELLA GRU SENZA ZAVORRE, CON ALTEZZA E BRACCIO MAX.**  
 PESO DE LA GRUA SIN LASTRE CON FLECHA Y ALTURA MAX. – CRANE WEIGHT WITHOUT BALLAST WITH LONGEST JIB AND MAX. HEIGHT  
 KONSTRUKTIONSGEWICHT – A VIDE SANS LEST AVEC FLECHE ET HAUTEUR MAX. **kg 25175**


# MECCANISMI


## MECANISMOS – MECHANISMS ANTRIEBE – MÉCANISMES

<b>MOVIMENTO</b> MOVIMIENTO MOVEMENT BEWEGUNG MOUVEMENT	<b>ALIMENTAZIONE</b> ALIMENTACION OPERATING VOLTAGE BETRIEBSSPANNUNG TENSION DE SERVICE	<b>PRESTAZIONI</b> FUNCIONAMIENTOS PERFORMANCES LEISTUNGEN EXÉCUTIONS	<b>POTENZA NECESSARIA</b> POTENCIA NECESARIA POWER REQUIREMENT KRAFTE DARF PUISSANCE NÉCESSAIRE
---------------------------------------------------------------------	-----------------------------------------------------------------------------------------------------	-----------------------------------------------------------------------------------	-------------------------------------------------------------------------------------------------------------

		▷ m/1' - kg	▷▷ m/1' - kg	▷▷▷ m/1' - kg	▷▷▷▷ m/1' - kg	
<b>SOLLEVAMENTO</b> ELEVACION – HOISTING HEBEN – LEVAGE   <b>INVERTER</b>	400 V 50 Hz	6 ↑↓	11 ↑↓	30 ↑↓	52 ↑↓	kW 11
		2500	2500	2500	1300	
	400 V 50 Hz	6 ↑↓	11 ↑↓	38 ↑↓	64 ↑↓	kW 18
		2500	2500	2500	1300	

		▷ m/1'	▷▷ m/1'	▷▷▷ m/1'	▷▷▷▷ m/1'	
<b>CARRELLO</b> CARRILLO – JIB TROLLEY LAUFKATZE – DISTRIBUTION   <b>INVERTER</b>	400 V 50 Hz	9	22	40	60	kW 3

		▷ g/1'	▷▷ g/1'	▷▷▷ g/1'	▷▷▷▷ g/1'	
<b>ROTAZIONE</b> ROTACION – SLEWING DREHEN – ORIENTATION   <b>INVERTER</b>	400 V 50 Hz	0 → 0.08	0.08 → 0.19	0.19 → 0.38	0.38 → 0.91	kW 6.5

		▷ m/1'				
<b>TRASLAZIONE</b> TRASLACION – TRAVELLING SCHIENENFAHREN – TRANSLATION   <b>INVERTER</b>	400 V 50 Hz	C (m 3.8x3.8)	0 → 20			kW N° 2 x 3



Conforme alle direttive  
CEE sul livello acustico  
2000/14/CE

Conforme con las directivas  
CEE sobre el nivel acustico


In compliance with the EEC  
instructions on noise level

Gemass EWG-Richtlinien für  
den Schall-Leistungspegel

Conforme aux directives CEE  
sur le niveau acoustique

## POTENZA RICHIESTA

### POTENCIA-ELECTRICA NECESARIA – NECESSARY ELECTRIC POWER KRAFTBEDARF – PUISSANCE ELECTRIQUE NÉCESSAIRE

<b>ALIMENTAZIONE TRIFASE</b> TRIFASICA – THREE PHASE DREIPHASIGE – TRIPHASE	 11 kW	20 kW <sup>400 V</sup> <sub>50 Hz</sub>	 18 kW	28 kW <sup>400 V</sup> <sub>50 Hz</sub>
-----------------------------------------------------------------------------------	-------------------------------------------------------------------------------------------	-----------------------------------------	---------------------------------------------------------------------------------------------	-----------------------------------------

Gru senza traslazione

Grúa sin traslación

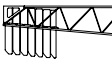
Crane without travelling equipment

Krane ohne schienenfahren

Grue sans translation

## ZAVORRA DI CONTROBRACCIO

### LASTRE DE CONTRA FLECHA – COUNTER JIB BALLAST GEGEN AUSLEGERBALLAST – LEST DE CONTRE-FLÈCHE

	<b>BRACCIO (m)</b> FLECHA – JIB AUSLEGER – FLECHE	55	51	47.3	41.5	35.8	30	24
	<b>ZAVORRA (kg)</b> LASTRE – BALLAST BALLAST – LEST	14340	13080	12160	12160	9980	7800	5620

Con riserva di modifiche

Derecho de modificaciones reservadas

Subject to change without notice

Anderungen vorbehalten

Modifications réservées