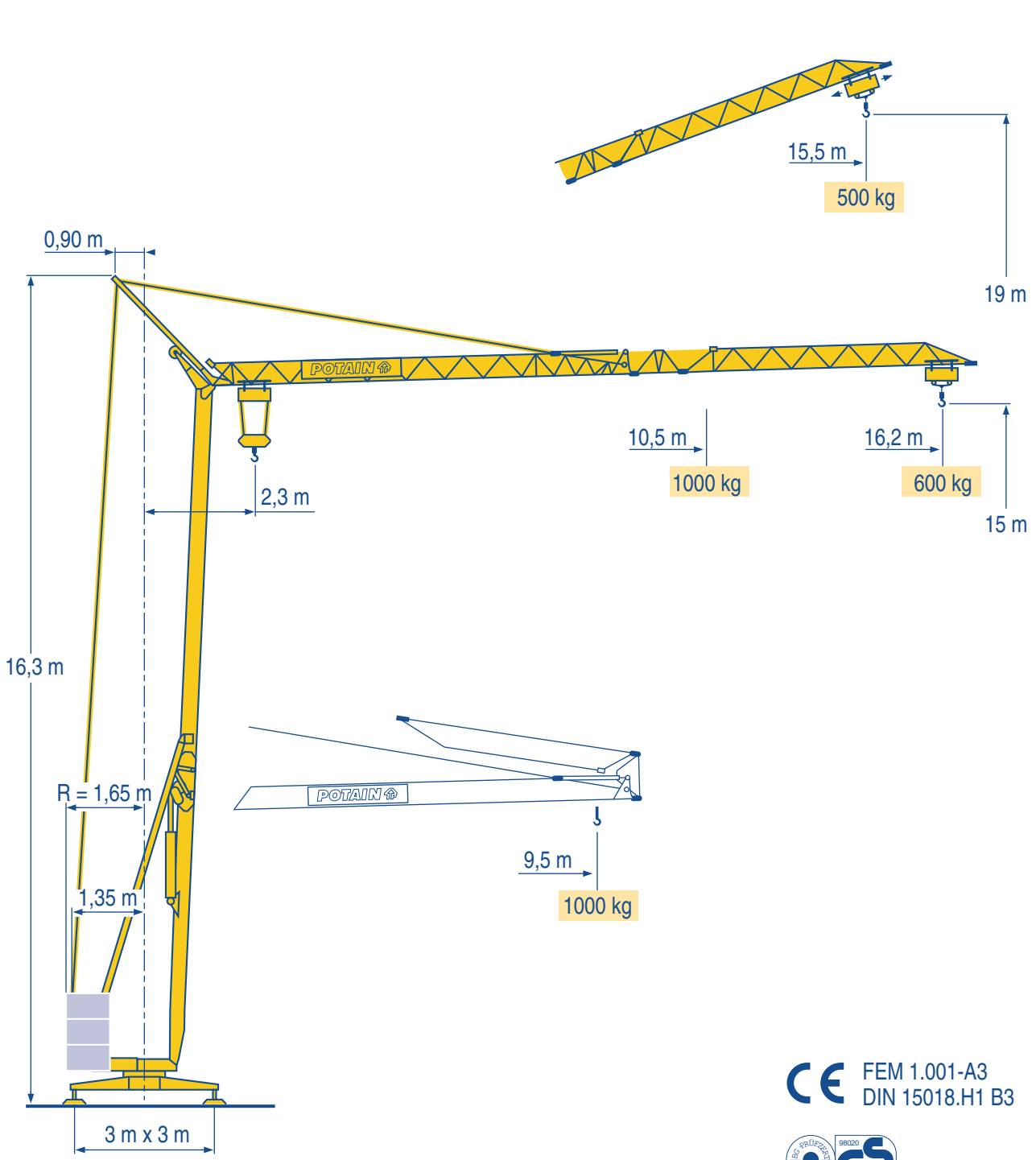


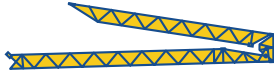
HD 10 A



- HD HDM
- HDT
- GTMR
- CITY CRANE
- TOPKIT MD MAXI MD
- MAXI TOPKIT
- Topless MDT
- MR

CE FEM 1.001-A3
DIN 15018.H1 B3





16,2 m 2,3 9,5
1000



10,5 11 12 13 14 15 16 16,2 m
1000 950 855 780 715 660 610 600 kg

LMK 1

Flèche relevée
Ausleger in Steilstellung

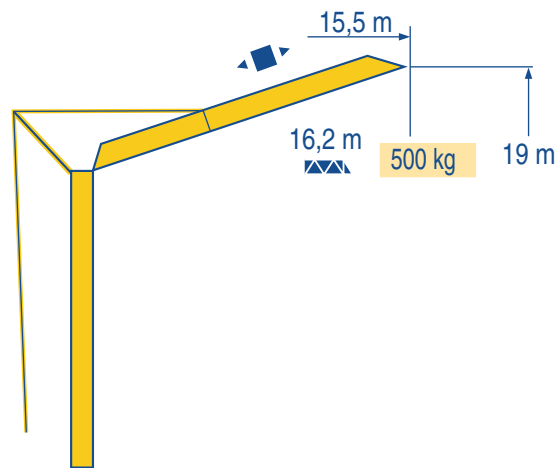
F
D

Luffing jib
Flecha izada

GB
E

Braccio impennato
起升吊臂

I
C



LMK 1



Chariot distributeur

F

Traversing trolley

GB

Carrellino distributore

I



Verfahrbare laufkatze

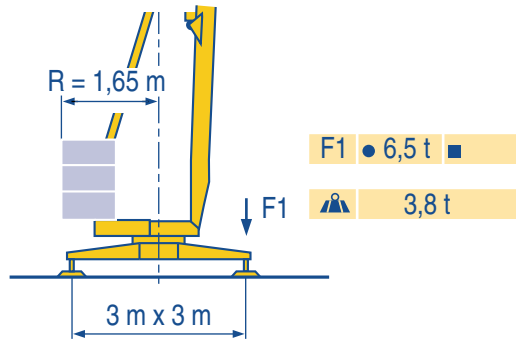
D

Carro distribuidor

E

变幅小车

C



LMK 1

- Réactions en service
 - Réactions hors service
 - ▲ A vide sans lest (ni train de transport) avec flèche et hauteur maximum
-
- Reaktionskräfte in Betrieb
 - Reaktionskräfte außer Betrieb
 - ▲ Ohne Last, Ballast (und Transportachse), mit Maximalausleger und Maximalhöhe.

- Reactions in service
 - Reactions out of service
 - ▲ Without load, ballast (or transport axles), with maximum jib and maximum height.
-
- Reacciones en servicio
 - Reacciones fuera de servicio
 - ▲ Sin carga, sin lastre, (ni tren de transporte), flecha y altura máxima.

- Reazioni in servizio
 - Reazioni fuori servizio
 - ▲ A vuoto, senza zavorra (ne assali di trasporto) con braccio massimo e altezza massima
-
- 工作状态下的反应
 - 非工作状态下的反应
 - ▲ 空载无压重也无运输车有吊臂和最大高度

Mécanismes
Antriebe

Mechanisms
Mecanismos

Meccanismi
机构

						ch - PS hp	kW				
▲	5 L2 V5 Triphase	400 V	m/min	—		↓ 17	5	3,7			
			kg	—		1000					
	6 LVF 5 Tri-Monophasé 230 V/400 V	230 V --	m/min	↑ 3,5	↓ 3,5	↑ 12	↓ 20	↑ 20	↓ 34	4	3
			kg	1000	1000	1000	1000	600	600		
	3 L2 V5 Mono-Triphase	400 V	m/min	↓ 3,5		↓ 20	6	4,4			
			kg	1000		1000			600		
▲	1 DC1 V2	—	m/min	—		↓ 9	3	2,2			
			kg	—		1000			600		
●	RVF 20	—	tr/min U/min rpm	20		0,3 → 1	1,5	1,1			
				0,3 → 1			1	0,6			

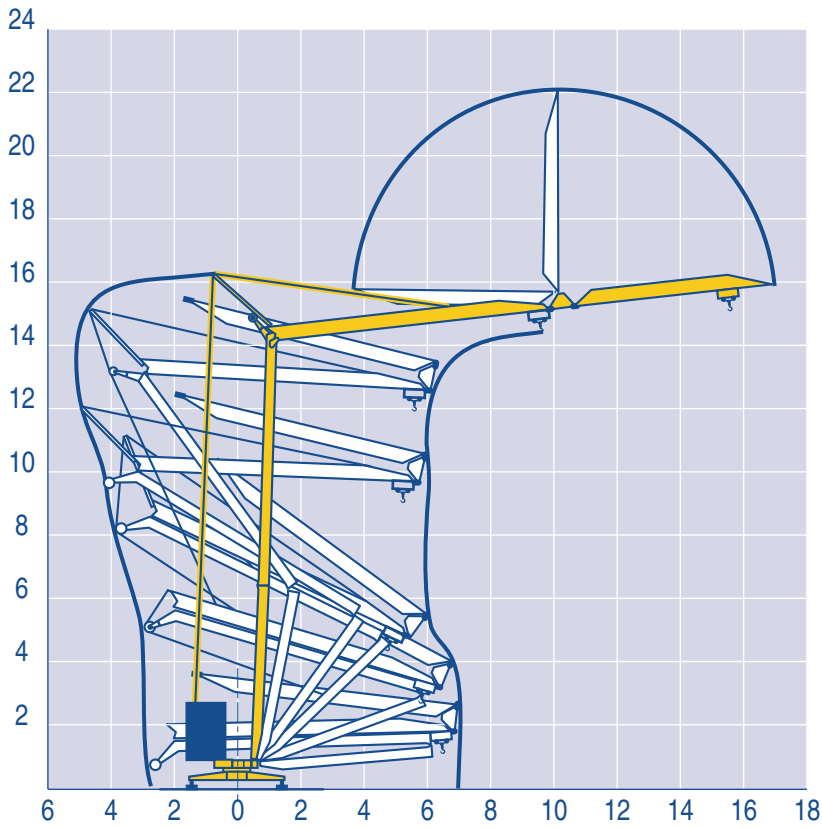
CEI 38	IEC 38	kVA	
230 V(+6% -10%) 50 Hz --	230 V(+6% -10%) 50 Hz	230 V : 4,6 kVA	84/534 - 87/405
400 V(+6% -10%) 50 Hz	400 V(+6% -10%) 50 Hz	400 V : 7,5 kVA	

LMK 3

- Levage
 - Distribution
 - Orientation
 - -- 50 Hz Monophasé
 - Conforme aux directives CEE 84/534 et 87/405 sur le niveau acoustique
-
- ▲ Heben
 - Katzfahren
 - Schwenken
 - -- 50 Hz Einphasige
 - Gemäss EWG-Richtlinien 84/534 und 87/405 für den Schall-Leistungspegel

- Hoisting
 - Trolleying
 - Slewing
 - -- 50 Hz Single phase
 - In compliance with the EEC 84/534 and 87/405 Instructions on noise level
-
- ▲ Elevación
 - Distribución
 - Orientación
 - -- 50 Hz Monofasica
 - Conforme con las directivas CEE 84/534 y 87/405 sobre el nivel acustico

- Sollevamento
 - Distribuzione
 - Rotazione
 - -- 50 Hz Monofase
 - Conforme alle direttive CEE 84/534 e 87/405 sul livello acustico
-
- ▲ 起升
 - 变幅
 - 回转
 - 电源 : 50 Hz 单相
 - 符合 CEE 84/534 - CEE 87/405 声晌度规定



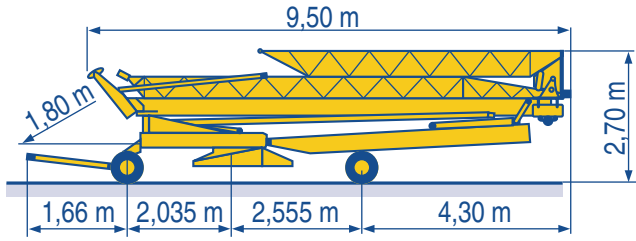
LMK 1

Transport
Transport

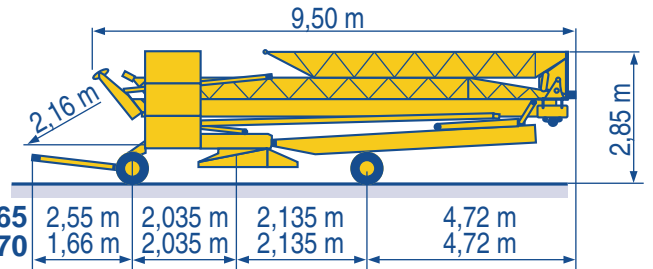
F
D
Transport
Transporte

GB
E
Trasporto
运输

I
C



DS30/S30 ○



DS65 S65
DS51 S70

DS65/S65

DS51/S70 ○

LMK 1

- Chantier
- Baustelle

- F Site
- D Obra

- GB Cantiere
- E 工地运输

- I
- C



18.Rue de Charbonnières, B.P. 173
F-69132 ECULLY Cedex
Tél. (33)04.72.18.20.20
Fax (33)04.72.18.20.00
<http://www.potain.com>
E-mail : mkt@potain.fr

HD 10 A

Copyright.Reproduction interdite © POTAIN 1997

Deutschland
POTAIN GmbH Tel : 06.105.704.0
Italia
POTAIN S.p.A. Tel : 0.331.49.33.11
Singapore
POTAIN PTE LTD Tel : (00.65) 227.1550

Réf. 1997.44 LMK 5